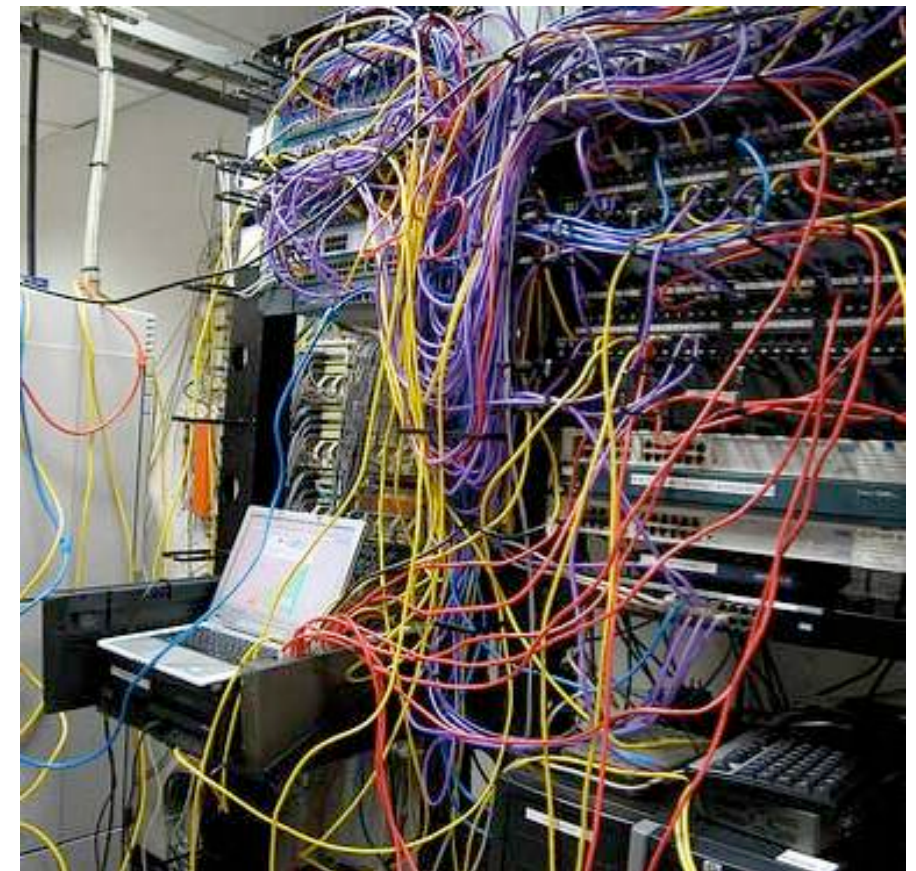


Converging Medical Device & Enterprise Networks

Medical Connectivity Consulting

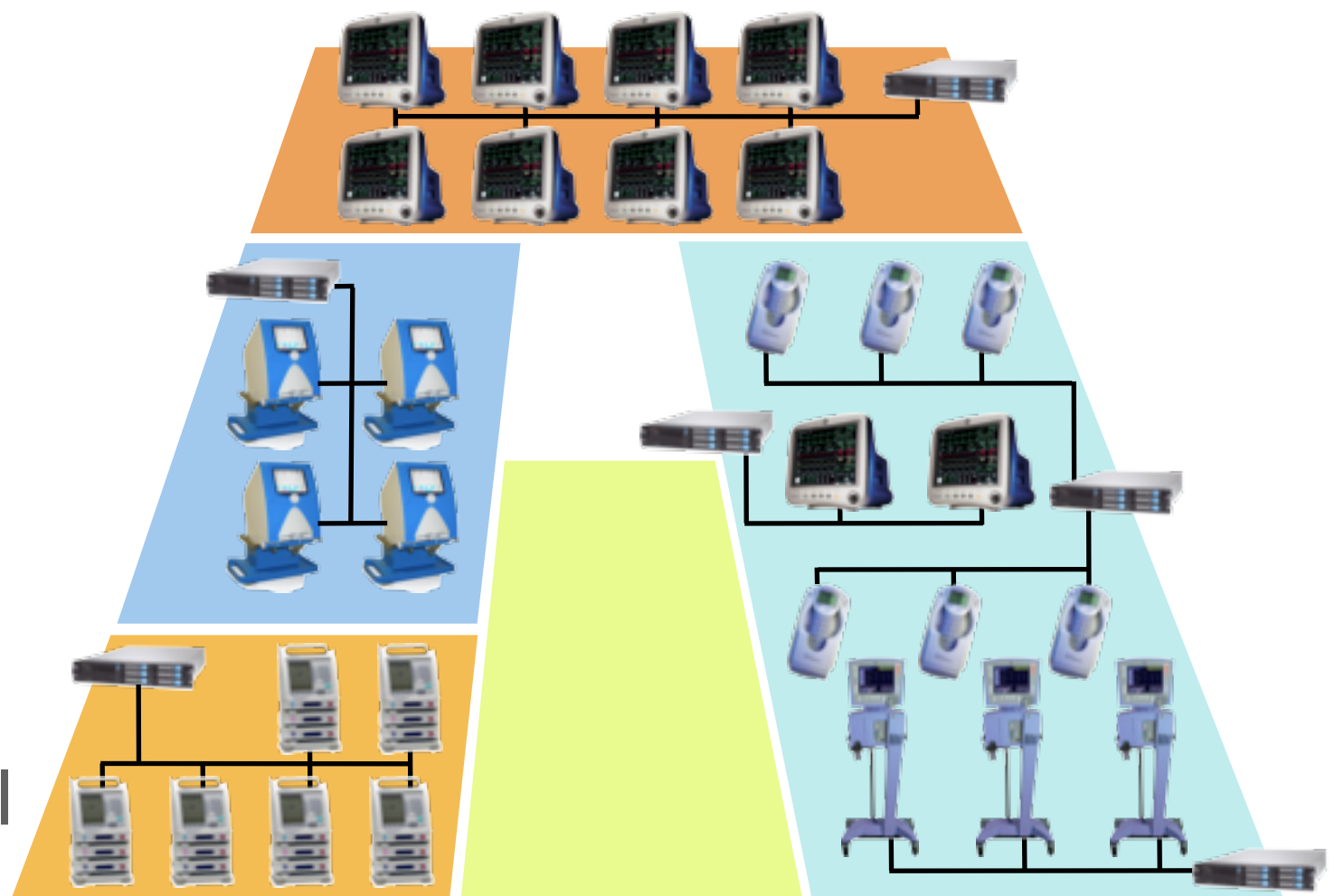


Agenda

- ▶ Medical device system networks
- ▶ Convergence challenges
- ▶ Best practices

Medical Device Networks

- ▶ Private networks
- ▶ Tightly controlled by vendor
- ▶ Easier to support
- ▶ Lower R&D costs
- ▶ Entire system is regulated
- ▶ Ideal for departmental systems



Private Network Limits

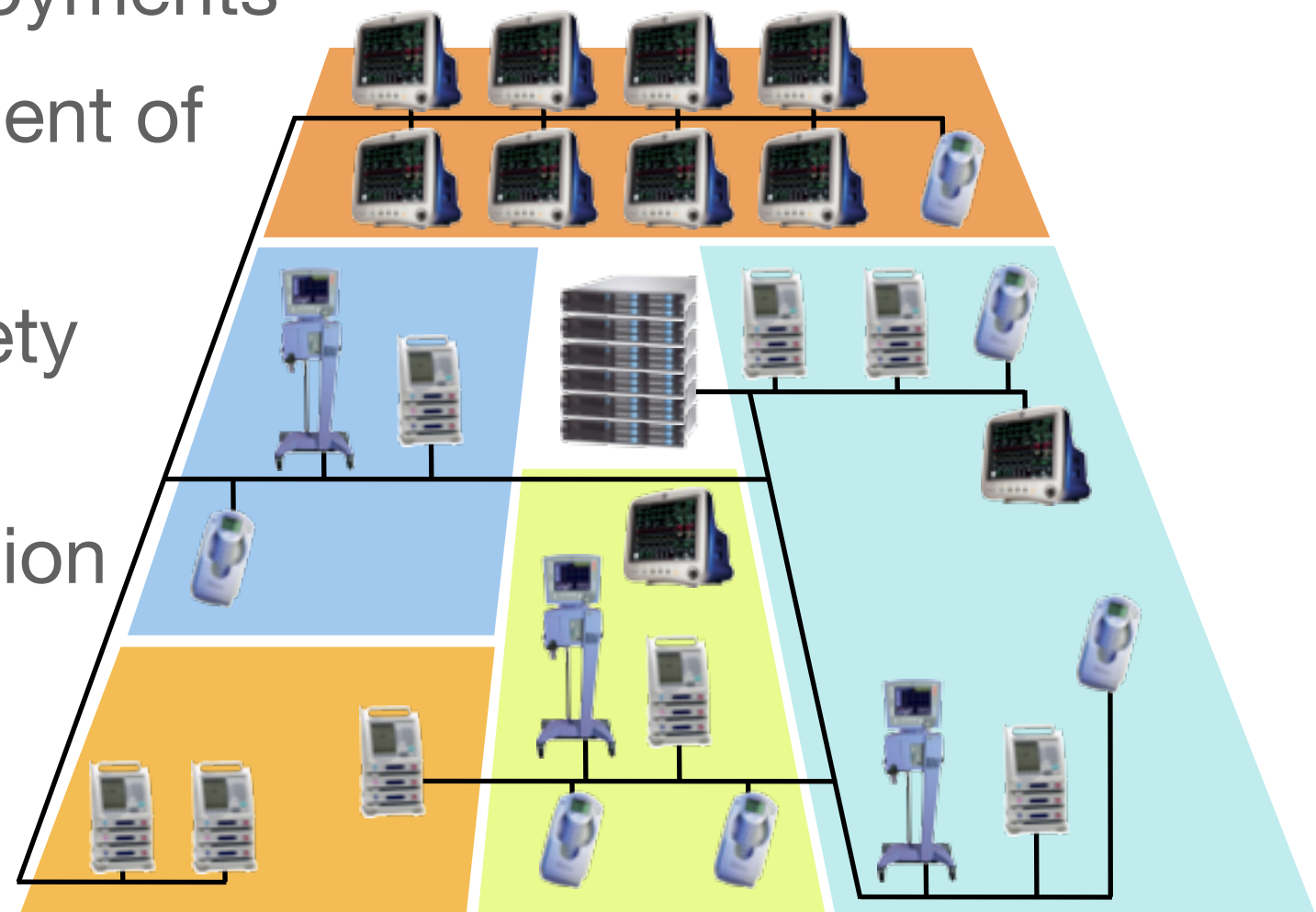
- ▶ Create “islands of information”
- ▶ Sometimes include discontinued third party products
- ▶ Not kept current with evolving network/computer technology
- ▶ Proliferate widely
- ▶ Barrier to enterprise deployments
- ▶ Customer sees unnecessary complexity, duplication and cost



Bob Metacalf, Ethernet inventor holding ThickNet network cable

Medical Device As Information Appliance

- ▶ Enterprise-wide deployments
- ▶ Overlapping deployment of different devices
- ▶ Driven by patient safety applications
- ▶ Driven by EMR adoption



EMR Adoption Model			
	Cumulative Capabilities	Q2 2008	Q3 2008
Stage 7	Medical record fully electronic; HCO able to contribute CCD as byproduct of EMR; Data warehousing in use	0.0%	0.1%
Stage 6	Physician documentation (structured templates), full CDSS (variance & compliance), full R-PACS	0.9%	1.0%
Stage 5	Closed loop medication administration	1.0%	1.3%
Stage 4	CPOE, CDSS (clinical protocols)	1.8%	1.9%
Stage 3	Clinical documentation (flow sheets), CDSS (error checking), PACS available outside Radiology	32.0%	32.9%
Stage 2	Clinical data repository, Controlled Medical Vocabulary, Clinical Decision Support System, may have Document Imaging	33.9%	33.2%
State 1	Ancillaries - Lab, Rad, Pharmacy - all installed	12.6%	12.5%
Stage 0	All three ancillaries not installed	17.7%	17.1%
	Total Hospitals	n = 5048	n = 5050

Data from HIMSS Analytics Database

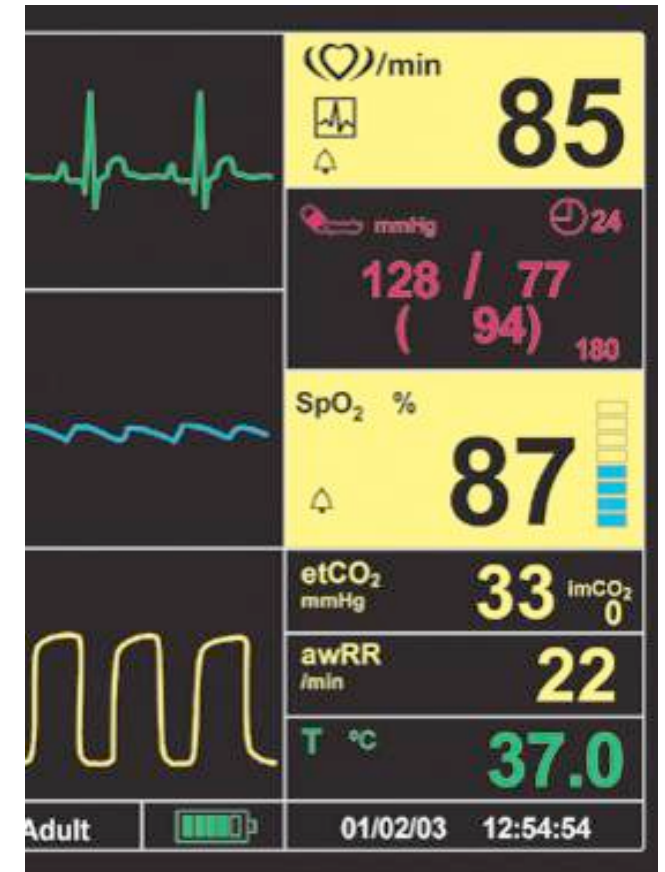
Agenda

- ▶ Medical device system networks
- ▶ Convergence challenges
- ▶ Best practices



Network Variability

Network design and
configuration
Authentication and
encryption
Network vendor
diversity



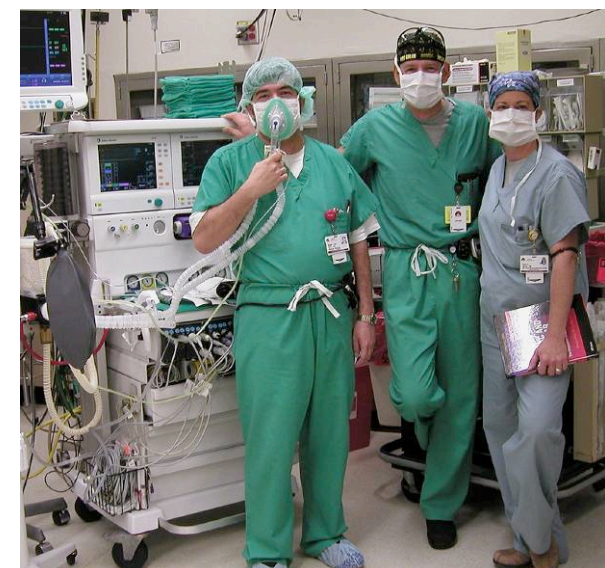
Network Management

Documentation

Network reliability & predictability

Test and change control

Emerging systems-of-systems problem



IEC 80001

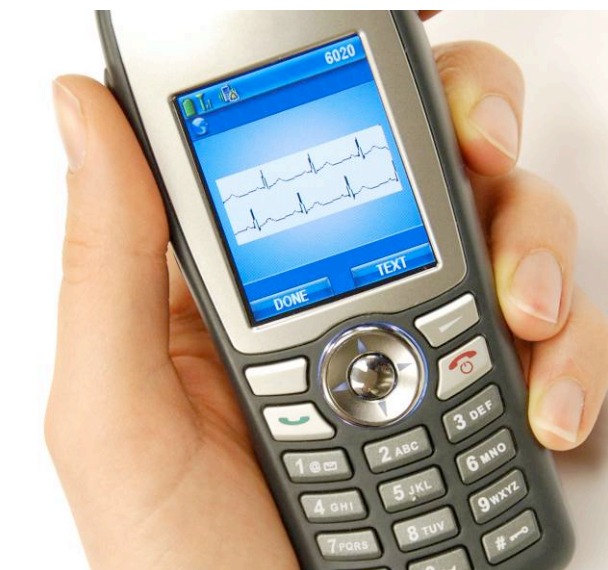
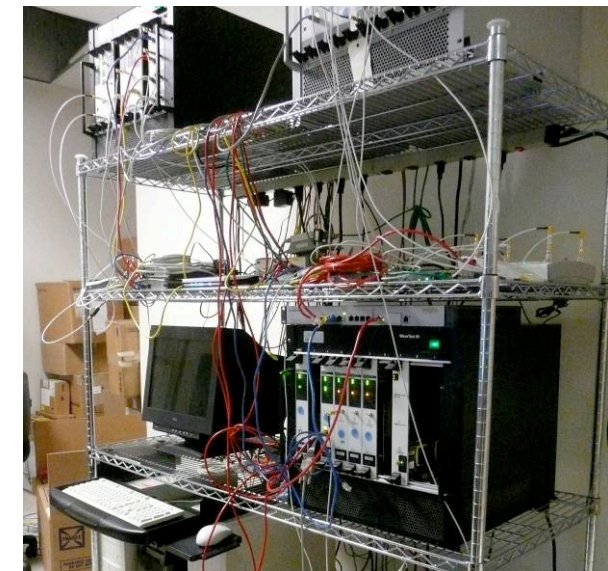
One or more networked medical devices

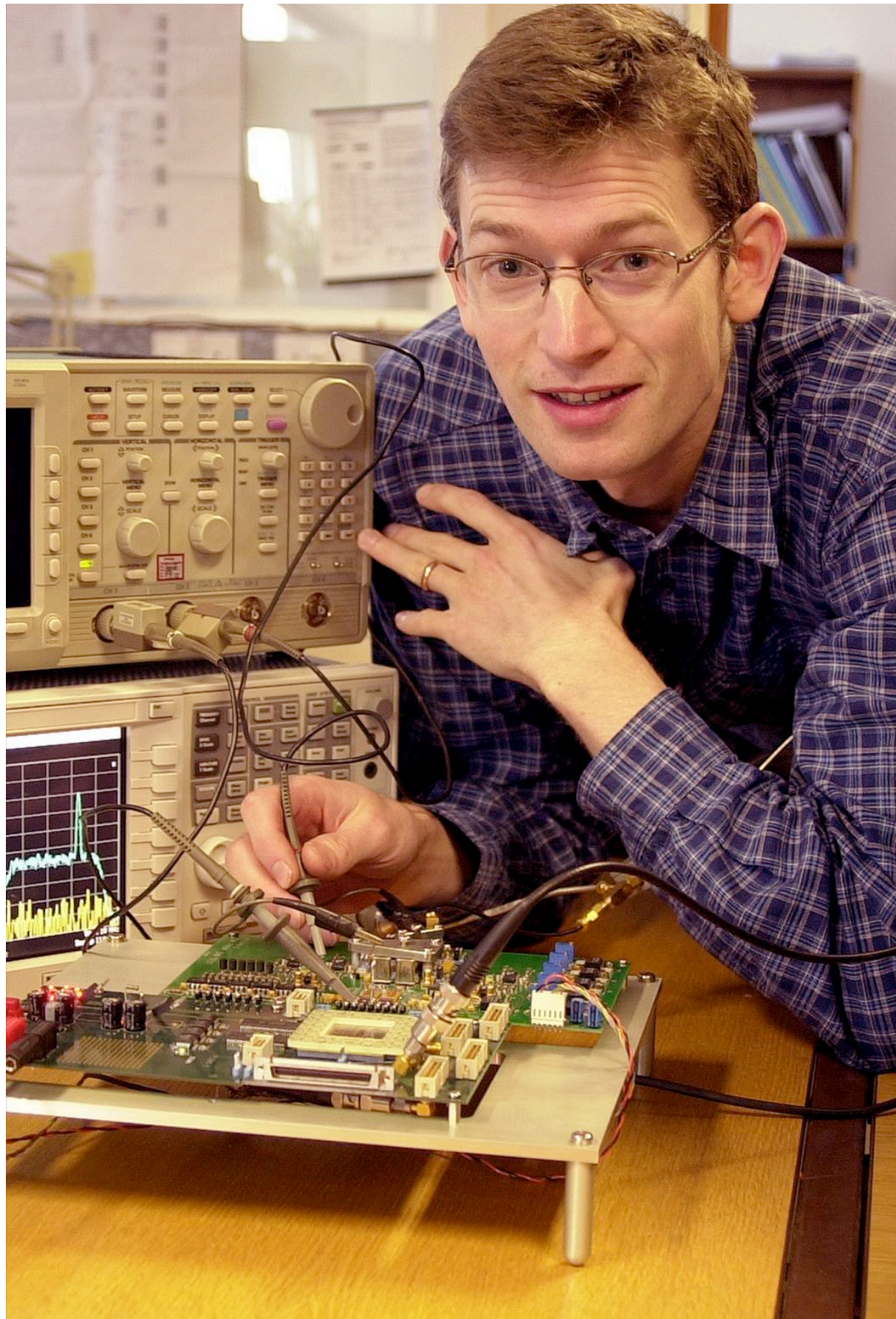
Formal risk management process (ISO 14971)

Manage networks as medical devices

Responsibility Agreements with vendors

Complete in 2010





Philips Research

Service & Support

Losing control of network environment

Complexity diagnosing problems

Shortage of general IT expertise

Regulatory

Maintaining QSR on open networks

Adequate verification testing

Consolidate WW regulatory issues

IEC 80001 - Responsibility Agreement



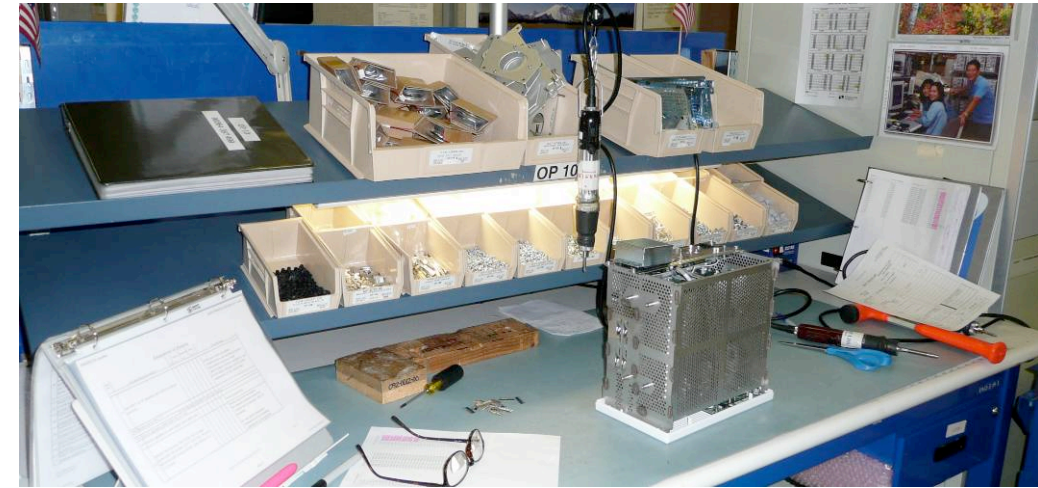
Product Development

Supporting enterprise IT variability

Supporting multiple network vendors

Medical device coexistence

Verification - scalability, environment



Agenda

- ▶ Medical device system networks
- ▶ Convergence challenges
- ▶ Best practices

Communications

Phones

Pagers

PDAs

Computers
on wheels

Overhead pages

Nurse call

Medical Devices

PoC diagnostics

Ventilators

Patient
monitors

IV pumps

Telemetry packs

Spot vital signs
monitors



Tasks

Patient care

Patient
assessments

Alarms

Meds
administration

Documentation

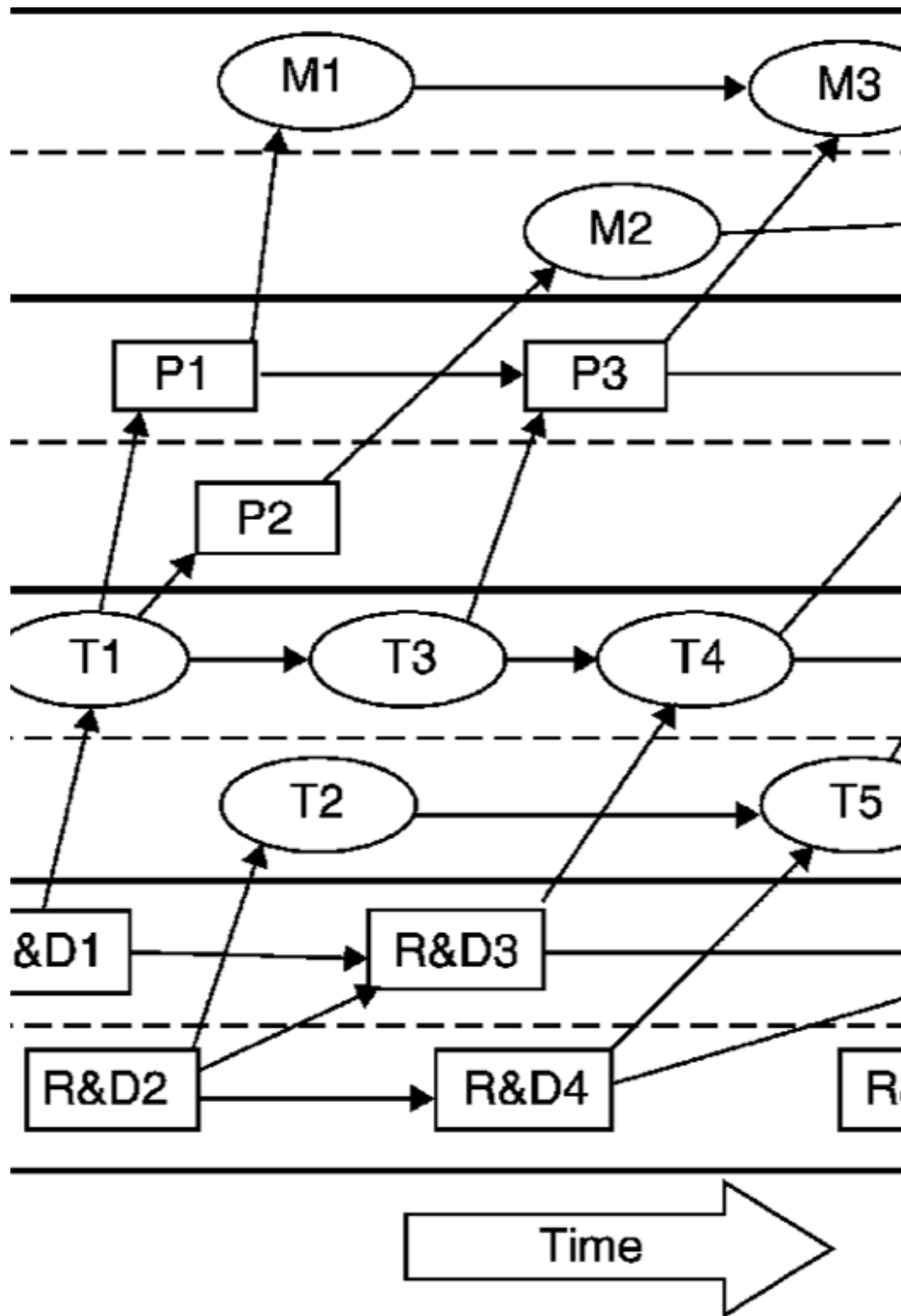
Coordinating care

Patient education

Networks are *Designed*

- ▶ New applications = new requirements = new design
- ▶ Get network specifications from medical device manufacturers
- ▶ Provider is responsible for ensuring network remains within specifications





Create a Technology Roadmap

Across clinical areas

Across technologies

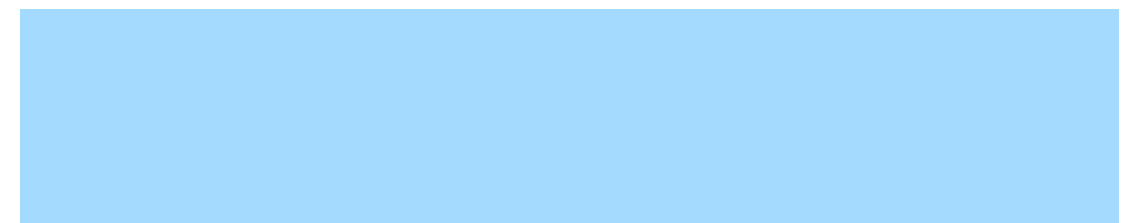
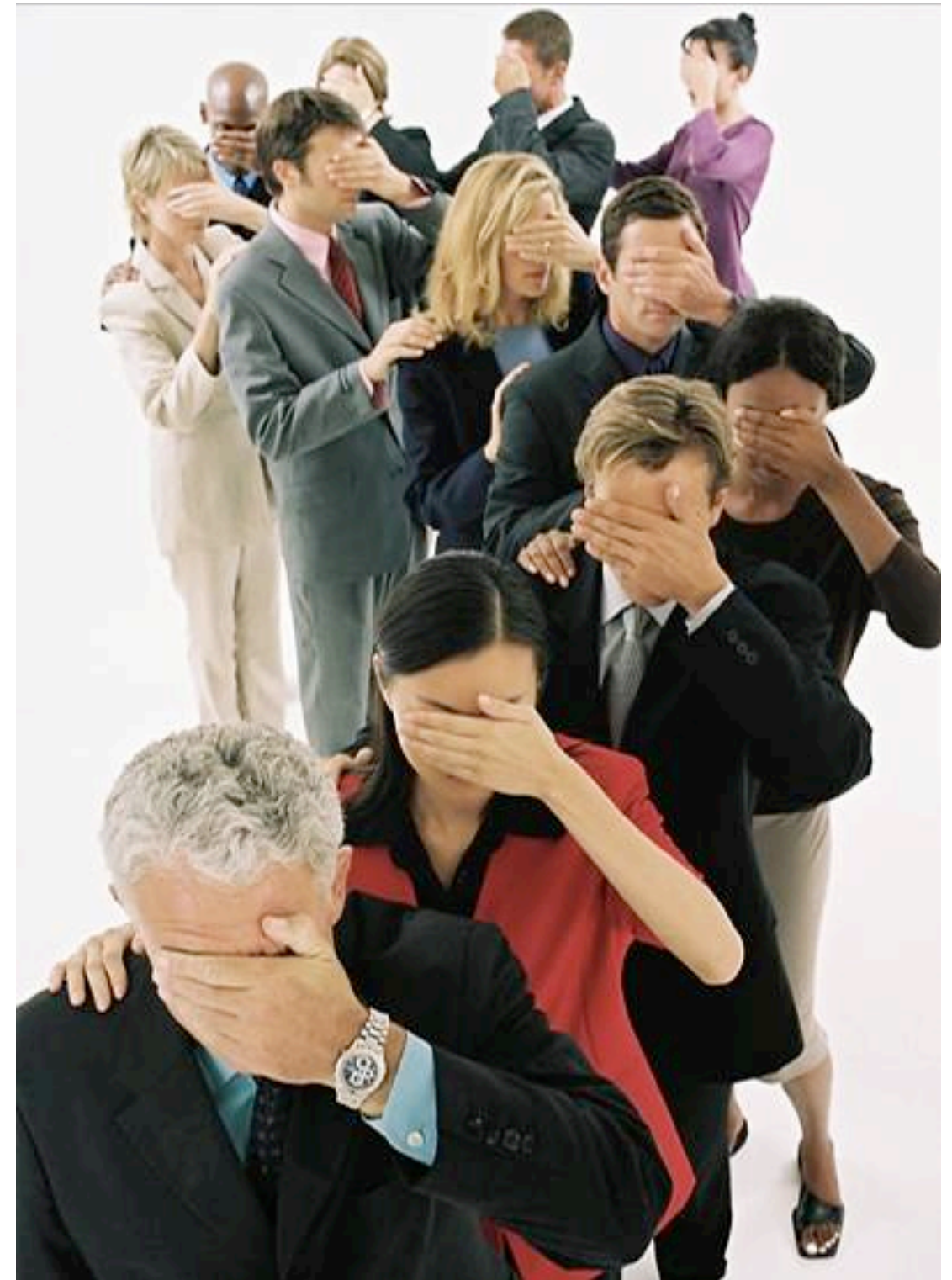
Note specific solutions, integrations, and required infrastructure

Balance IT Standards with Clinical Needs

Core mission is *healthcare delivery* not IT delivery

Proactively disclose your standards to manufacturers

Be flexible

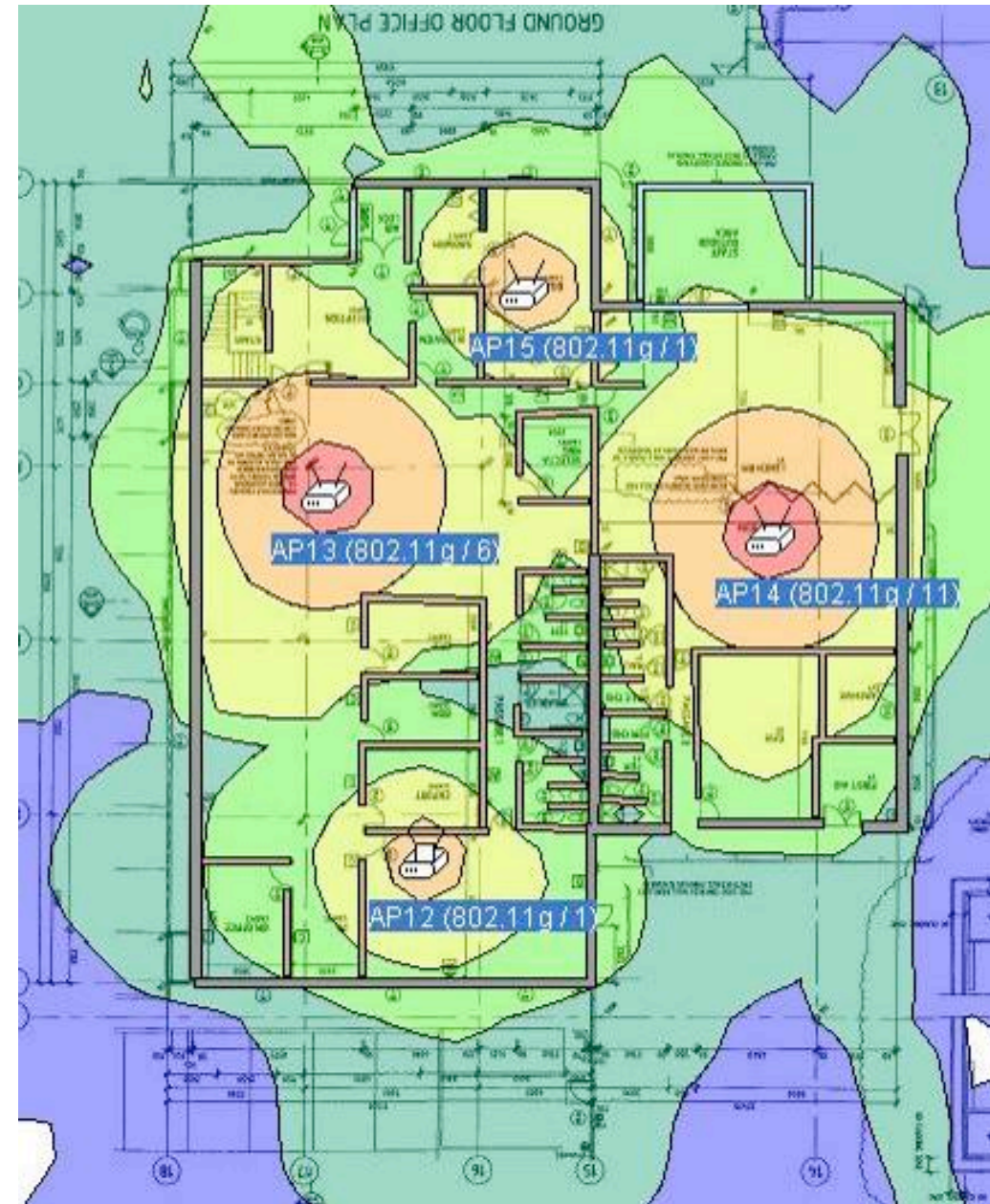


Monitor & Manage Networks

Maintain manufacturer's specifications

Realistic test environment

Rigorous change control



Bibliography

[IEC 80001 - An Introduction](#)

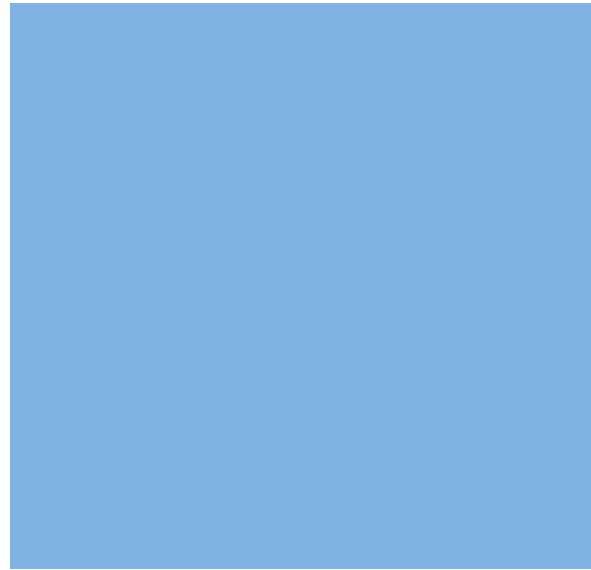
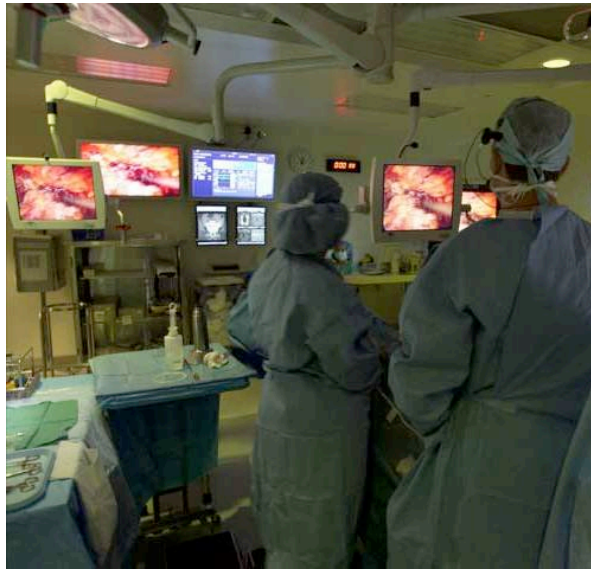
[IEC 80001 - To Impact Providers](#)

[Wi-Fi Device Drivers for Medical Devices](#)

[Medical Device Networks Trouble Industry](#)

[Can We Fix Wireless Healthcare?](#)





Tim Gee
Medical
Connectivity
Consulting

Blog at:
www.medicalconnectivity.com

